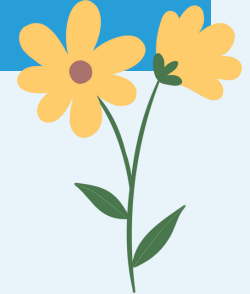


**MOVE PEOPLE TOWARD JOBS!**

# PROGRESSIVE CONNECTIONS

THE PWAC NEWSLETTER



## A LETTER FROM OUR CEO

Happy Spring to all of our supporters!

With the start of this new season, there is a lot happening here at PWAC! Planning for our second annual "Grip It & Rip It" Golf Scramble on **Saturday, June 24** is in full swing, and thanks to our amazing community of supporters, all the spots for our foursome golf teams are filled! **HOWEVER**, there are still plenty of opportunities to sponsor this event or donate a gift or gift card (\$25+ value) for our raffle if you are interested! We've included our registration form for the golf outing on page 9 in this newsletter, so you can download, complete, and send it to us to register your gift or sponsorship.

In other news, our Progressive Lawn and Landscaping crews have been itching to get back to work out in the community. They can't wait to start mowing lawns, doing spring clean-ups, and providing for all your other lawncare needs! Our Progressive Commercial Cleaning crews are also ready to help with your spring cleaning, and Progressive Document Destruction provides a range of services for the secure and efficient shredding and recycling all your old documents. Our crews are excited, ready to work, and provide amazing quality services, so consider giving us a call at **724-548-5664** if you are interested in learning more or requesting a quote!

The **Armstrong County Community Foundation's Week of Giving** is also fast approaching **NEXT WEEK** from **May 8-12**, so don't forget to plan to donate during that week if you are inclined to give! All donations made during that week will be used to calculate the amount of funding PWAC will receive from the Armstrong County Community Foundation's Bonus Fund! All the donations we receive during the Week of Giving go toward the purchase of equipment, uniforms, memberships, and other needs within our programs that ultimately benefit our clients and trainees.

We look forward to continuing our work fostering inclusivity and growth in each individual we serve...yet, it would not be possible for us to continue that mission if it weren't for our incredible supporters. This August will mark our **55th Anniversary**, a milestone we intend to celebrate in September! Keep an eye out for more details about that!

From all of us at PWAC, thank you for all you do! We are grateful for your consistent support.

Sincerely,

*L. Michelle Beefer*  
Chief Executive Officer

### IN THIS ISSUE:

- Featured Program: Supported Employment
- Featured Employer: Cook Medical
- Week of Giving/Golf Outing Info
- Spring at PWAC
- Wishlist
- Staff Anniversaries
- Spring Crossword Puzzle!
- Our Team

# FEATURED PROGRAM: SUPPORTED EMPLOYMENT



**Michelle** has been working at McDonald's in Kittanning since 2006!

## *Community Employment!*

Clients who are interested in and ready for the responsibility of community employment can enroll in PWAC's Supported Employment program. This program matches each individual with a PWAC job coach who helps guide them through each phase of the job search and interview process.

Once a client secures a job in the community, his or her job coach continues to work closely with them to ensure good working relationships and skill development. Job coaches also communicate frequently with the employer to make sure the hired client is performing well and fitting in appropriately with the work environment.

Part of PWAC's ultimate mission is to guide our clients and trainees to successful, maintained community employment; so, we at PWAC are very proud of every individual who chooses to take that step! PWAC is proud of all our Supported Employment individuals. If you see any of these great men and women working out in the community, be sure to say hello!



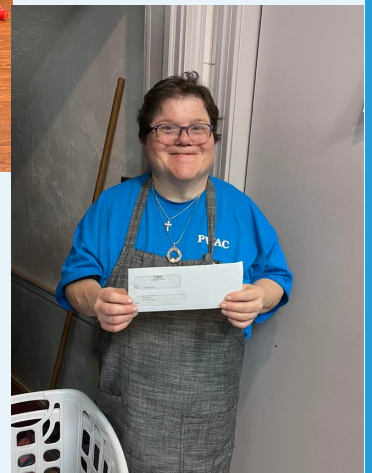
**Mathew** works at Belleflex Technologies as a janitor in Ford City. His supervisor said he "always comes in enthusiastic and ready to work. After 9 years, we don't know what we would do without him."

**Jenny** works at Owl Bee Learning Daycare in Ford City. Owl Bee owner, Stacia Boguslawski, said Jenny "interacts with the kids by reading and singing to them. She is very hands on."



**Erma** recently started working at A'Mano Eatery in Kittanning as a dishwasher. Here she is with her first paycheck!! According to her manager, Erma is "strong willed, determined and hardworking."

**Brittany** also works at Owl Bee Learning Daycare in Ford City. Owner Stacia Boguslawski said that she "is direct with the kids and follows through with instruction from the teacher."





# WORKING IN THE COMMUNITY!



**Michael** (pictured with Erma) has worked at A'Mano Eatery, his family's local Italian restaurant in Kittanning, as a dishwasher for several years. His manager said Mike "brightens everyone's day with his jokes and loving personality."



CEO **Michelle Reefer** and Community Employment Specialist **Jenn Redick** visited Mike and Erma one day while they were at work!



**Justin** has been working at Shop 'n Save since July 2022. He bags groceries, collects carts, and completes other tasks around the store. His job coach said Justin is "definitely cut out for community jobs; he is a very good worker."



**Eric** started working several months ago as a dishwasher at the Meredith Inn in Kittanning. He enjoys his work!

## Not pictured:

- **Tim** works at the Meredith Inn in Kittanning.
- **Sheena** works at McDonald's in Kittanning.
- **Janet** works at the Driver's License Center in Kittanning.

# FEATURED EMPLOYER: COOK MEDICAL

**COOK**<sup>®</sup>  
**MEDICAL**



Employees and leadership from Cook Medical were glad to come tour PWAC's main facility and inspect the "clean room."

One of PWAC's newest and most advantageous partnerships is with Cook Medical, a medical device manufacturing company, which operates a local branch in Vandergrift, PA.

First founded in Bloomington, Indiana in 1963, Cook Medical is an established medical device manufacturer that supplies minimally invasive medical devices for a wide variety of needs within the modern hospital. The first products ever manufactured by Cook included wire guides, needles, and catheters. In the time since 1963, Cook has grown substantially

and now manufactures products for over 60 clinical specialties, including neurosurgery, oncology, vascular medicine, and others. Cook supplies medical device products to 135 countries and employs more than 12,000 employees across all Cook Group companies globally.

In 2021, PWAC connected with members of the local Vandergrift branch of Cook Medical. Cook decided to hire crews of PWAC trainees to complete small parts assembly projects to aid them in their manufacturing processes for certain products, but due to sanitary requirements, PWAC first needed to dedicate a room in its main facility to Cook's production contract. PWAC administration quickly made arrangements to turn the old conference room into a "clean room," and in February, visitors from the Vandergrift branch came to tour the finished room and perform a final inspection of it before approving it to be used for parts assembly (pictured).

Since then, Cook has frequently provided jobs for PWAC to complete, and each time, the clients and trainees are eager to complete their work. The projects that PWAC completes for Cook are instrumental in the assembly of hundreds of different kinds of medical devices that are routinely manufactured by Cook Medical. Cook provided their first assembly job for our trainees on March 1, expecting them to finish it in two weeks. It took the trainees four days!

PWAC is very grateful for generous partners like those at Cook Medical. Our trainees are so happy to complete jobs for them, and we are glad Cook chose PWAC to assist them with their additional workforce needs. Businesses like Cook that are dedicated to diversity and the inclusion of people with disabilities are a great asset to our communities and to those we serve!

**If your or your business has any type of need for additional manpower, whether that occurs continuously or on a case-by-case basis, consider contracting with PWAC so that we can help meet your needs while you provide valuable skills training and work experience to our clients and trainees! Call us at 724-548-5664 to discover how you can partner with us today!**



# HARD AT WORK!



The PWAC facilities crew turned the old conference room into a "clean room" by replacing the flooring and equipping the room with stainless steel tables and storage racks.



The trainees enjoy working on jobs for Cook Medical!





# The Week of Giving is here!

Consider donating to PWAC during the annual Armstrong County Community Foundation Week of Giving from May 8-12!

ARMSTRONG COUNTY  
COMMUNITY FOUNDATION



WEEK OF  
GIVING  
MAY 8-12, 2023

All donations of \$25 or more will be used to calculate the amount of bonus funding PWAC will be eligible to receive from the Armstrong County Community Foundation's Bonus Fund!

*Your donation matters!*

All donated funding is used to benefit the quality experiences we provide to our clients and trainees.

Donations are used to purchase equipment, uniforms, memberships for community outings, or is used to meet other needs across our programs.

*Read the following letter from our CEO to learn how you can donate!*







301 Oak Avenue  
Kittanning, PA 16201

Phone: 724-548-5664  
Fax: 724-545-2008  
www.progressiveworkshop.com

April 11, 2023

## Dear PWAC Friends and Supporters,

The Progressive Workshop of Armstrong County is excited to announce that we are once again participating in the **Armstrong County Week of Giving**, an annual event sponsored by the Armstrong County Community Foundation!



During the week of **May 8 - May 12**, all donations (over \$25) donated to the Progressive Workshop of Armstrong County will be collected and used to calculate the amount of bonus funding that PWAC will receive from the Community Foundation's Bonus Fund!

Donations made payable to the Progressive Workshop of Armstrong County can be received in the following ways:

1. Write a check payable to the Progressive Workshop of Armstrong County, then:
  - a. Mail it to PWAC, 301 Oak Avenue, Kittanning, PA 16201

**OR**

  - b. Mail it to Week of Giving, P.O. Box 895, Kittanning, PA 16201

**\*Checks must be dated from May 8th through May 12th. Checks must be received by 5:00 p.m. on May 12.**

2. Make an online donation in one of two ways:
  - a. Use the Community Foundation's online option on their website at [www.servingtheheart.org](http://www.servingtheheart.org)
    - 1) Click on "Week of Giving" at the top of the homepage.
    - 2) Click on the "Make a Donation" tab.
    - 3) Complete the form and choose "Progressive Workshop of Armstrong County."

**OR**

  - b. Visit [www.progressiveworkshop.com/donations](http://www.progressiveworkshop.com/donations)

**\*Online giving: Donations must be made between May 8th and May 12th at midnight.**

Donations received during the Week of Giving are used to directly benefit clients and trainees served by the Progressive Workshop of Armstrong County. Donated funds are used to make necessary purchases, including equipment, uniforms, outings, and more!

Please share this letter with others who you think might be interested in supporting our organization. If you have questions, please call our office at 724-548-5664 or email us at [info@progressiveworkshop.com](mailto:info@progressiveworkshop.com). Thank you for your support!

Kind Regards,

L. Michelle Reefer  
CEO



*Join us for our second annual*  
**"GRIP IT AND RIP IT"**  
**GOLF SCRAMBLE!**

## **Dear PWAC Friends and Supporters,**

On behalf of the Progressive Workshop of Armstrong County, Inc., I would like to invite you to participate in and support the second annual PWAC "Grip It and Rip It" Golf Scramble to be held Saturday, June 24, 2023, at the Apollo Elks Golf Course in Apollo, PA! This event will benefit PWAC's Client/Trainee Activity Fund, so all proceeds raised will go toward projects such as uniform shirt costs, equipment needs, entry fees, and special programming across all of PWAC's programs.

The Progressive Workshop of Armstrong County (PWAC) is a registered 501(c)(3) non-profit organization that provides vocational rehabilitation training and job support to adults who have been diagnosed with physical, intellectual, and/or emotional disabilities. Since PWAC was founded in 1968, our agency has grown substantially as we have worked to expand our programming based on the needs of our community and the individuals we serve. In August, we will celebrate our 55th anniversary, a milestone that would not be possible without the continued support of our generous donors who make it possible for us to offer our quality programs and services.

At this time, we have already filled all of our foursome golf team spots for this outing, but if you would like to support PWAC by sponsoring this event or donating a gift or a gift card valued at \$25 or more for our basket auction and giveaways, please complete our registration form to indicate your level of support and return it to **PWAC Golf Scramble, 301 Oak Avenue, Kittanning, PA 16201**.

We are looking forward to hearing from you and discussing any potential interest you may have in supporting our clients and trainees through this great summer event as we celebrate our 55th year of operations! If you have any questions about PWAC or the details of the Golf Scramble, please contact us by phone at **724-548-5664** or by email at **[golfprogressiveworkshop.com](http://golfprogressiveworkshop.com)**.

Thank you for your consideration and for your support of PWAC!

Kind Regards,

A handwritten signature in black ink that reads 'L. Michelle Reefer'. The signature is fluid and cursive, with the first letters of the first and last names being capitalized and prominent.

L. Michelle Reefer  
CEO





# "GRIP IT AND RIP IT" GOLF SCRAMBLE

*Benefiting the PWAC Client/Trainee Activity Fund*

**Saturday, June 24, 2023**

Apollo Elks Country Club Lodge 386  
151 Elks Lodge Road, Apollo, PA 15613

**Registration begins at 8 a.m. - Shotgun start at 9 a.m.**

**Deadline to  
register is  
June 5, 2023**

**Prizes, Contests,  
Raffles!**

We will accept cash and  
credit cards at the event!

**Sponsorship Levels** - all levels include recognition on our website, digital media, and day-of Scramble signage

- \$750 "Birdie" Sponsor**
- \$400 "Par" Sponsor**
- \$250 Beverage Cart Sponsor**
- \$250 Swag Bag Sponsor**
- \$100 Hole Sponsor**

## **Registration**

Company Name: \_\_\_\_\_

Individual Name: \_\_\_\_\_

Street: \_\_\_\_\_

City: \_\_\_\_\_ State: \_\_\_\_\_ ZIP: \_\_\_\_\_

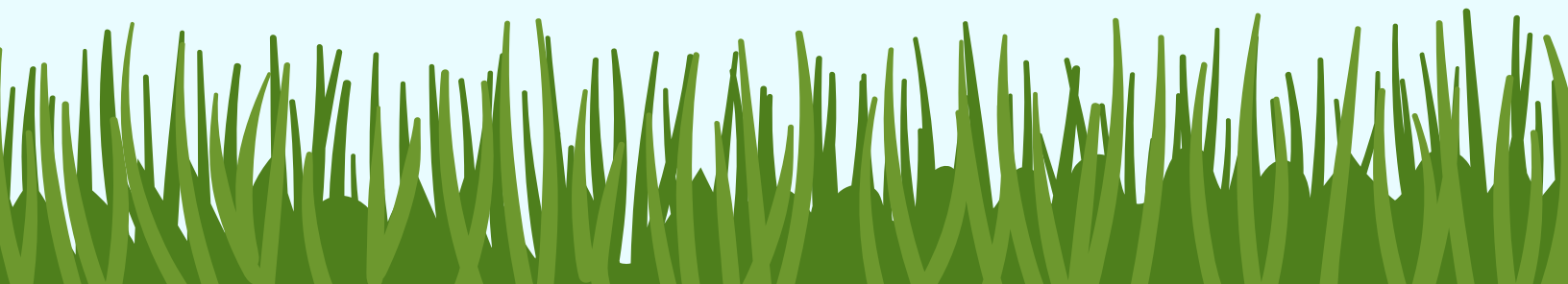
Day Phone: \_\_\_\_\_

Email Address: \_\_\_\_\_

## **Payment and Donation Options**

- Check** - please make payable to PWAC and mail to **301 Oak Avenue, Kittanning, PA 16201**
- Invoice via Square** - please provide email address above and submit form to [golf@progressiveworkshop.com](mailto:golf@progressiveworkshop.com)

- If you would like to donate items or gift cards (minimum \$25 value) that will be auctioned off during our raffle or used as prizes, please contact us at 724-548-5664 or drop items off at 301 Oak Avenue, Kittanning
- For more information, please email us at [golf@progressiveworkshop.com](mailto:golf@progressiveworkshop.com).
- Thank you for your interest and support!

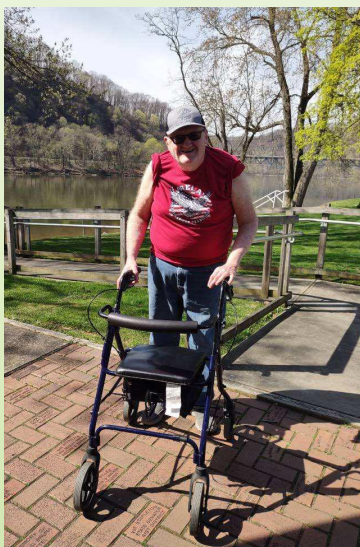




# Spring at PWAC!



 St. Patty's Day!





# OTHER PWAC HAPPENINGS



The trainees in Progressive Wood Works recently finished their sign! Thanks to our board member Chris Yanoff, who found the large saw blade featured in the center of the sign, our woodshop now has its very own signage! PWAC plans to have the sign hung near the shop entrance so that customers know where to go when picking up their orders.



They have also been hard at work building picnic tables, garden boxes, and other projects!

Check out their full inventory of hand-crafted products at [pwacprogressivewoodworks.com](http://pwacprogressivewoodworks.com)!



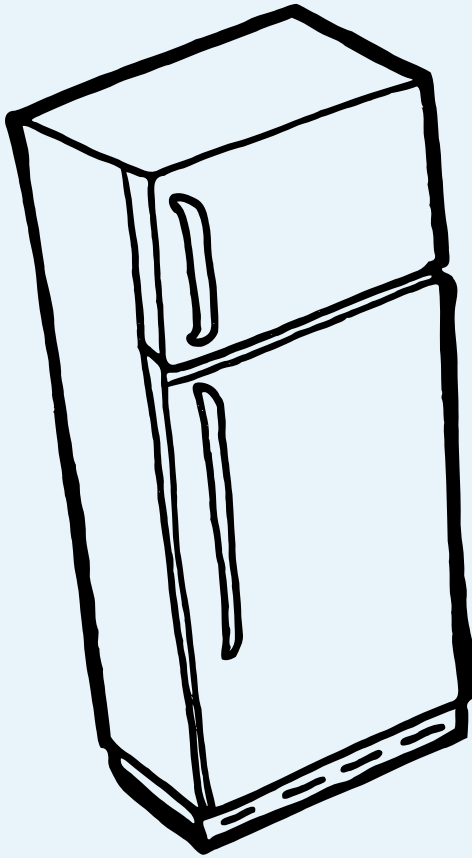
Jenn Goughler, our Vice President of Administration and Development, was honored with the "Professional Staff Member of the Year" award at the Nonprofit Academy Awards dinner! PWAC is proud to see her recognized for her work and accomplishments.

# SPRING WISHLIST



PWAC is grateful to each and every individual, business, or organization who chooses to make a donation of funds or tangible items for the benefit of our programs!

At this time, PWAC has a specific need for a mini refrigerator to be kept and used in the kitchen at our Oak Avenue facility.



If you have an unused mini fridge you would like to donate, or if you are willing to purchase and donate one to PWAC, please contact us at 724-548-5664 or at [info@progressiveworkshop.com](mailto:info@progressiveworkshop.com)! We are grateful for your help and generosity!

## Other needed items:

- Cleaning supplies, gloves
- Art supplies: markers, crayons, colored pencils, construction paper, glue, etc.



# STAFF ANNIVERSARIES

## MARCH - MAY

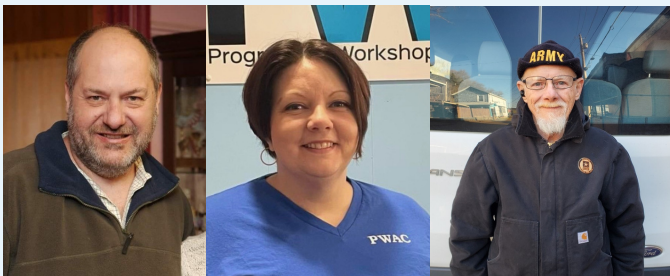


### Happy "Workiversary"!

Congratulations to our staff members who are celebrating a work anniversary this spring! We appreciate all you do!

### MARCH

Donna Hall	3-02-2012
Bob Reeseman	3-07-2011
Gary Fallecker	3-07-2022
Eli Ankney	3-12-2019
Doug McLaughlin	3-20-2018
Todd Mechling	3-20-2018
Kim Smith	3-23-2015
Candy Mangioni	3-19-1999



### APRIL

Robert Cook	4-04-2022
Beckie Ford	4-04-2022
Ralph Taylor	4-25-2022

### MAY

Cheri Goldinger	5-9-2022
Bill Brink	5-11-2015
Tim Luketic (not pictured)	5-15-2015
Duke Zellefrow	5-17-2021



# Spring Word Search

S V X P B C L E A N I N G V K R K L D I  
B D K F V C P G K R X N O W W G Q D F I  
Z L C W U H J W H E B U D S D D V N O S  
K Y J A Y N E U Q O B Q K J Y J X V G U  
C Q U T J C D R E E C B W R T Q S D O C  
M P J K N V E R A M Y A P D J N P E L T  
Q X R D M X B M A A N X H O G Z R S F L  
E U Q O Y K Y B L I S O Z C I S I T W F  
M E K N G E B I Z H S K R U V P N R D Y  
P F D E Y R X W Z E D E H M I F G U G U  
L F Q P U Q E W R T J N R E N H T C J V  
O C C W O O D S H O P H G N G E I T G P  
Y V F O G E S C S N N Z F T L T M I M K  
M Z N E Z K Z B Z I Q N R M M Q E O F B  
E X Q V C Q D S L U V X G Z A A X N T K  
N M R O Q Y Q N Z F P E S B N D S W X R  
T E N O C A K V L X U D H N L A W N K Z  
K E O Z F W J B O E D Q K B R F Z X Y Z  
N N F K X V T S G V Y T S Z H A J O B F  
E S P S L D W Y L A N D S C A P I N G Q

Progressive

Springtime

Document

Lawn

Destruction

Employment

Woodshop

Giving

Landscaping

Fundraiser

Cleaning

Golf



# THE PWAC TEAM

## Our Board of Directors

Lynn Sibley (President)	Linda Kuruc	James Swast
Rob Watt (Vice President)	Lee Walker	Amy Ford
Chris Yanoff (Secretary)	Gene Hughes	Jennifer Vensel
Sonie Mervis (Treasurer)	Justin Snow	Nancy Kennedy
Ted Breuer (Emeritus)	Jill McMeekin	Chris Evans
LuAnne Frerotte		

## Our Management

L. Michelle Reefer	Chief Executive Officer
Kim Smith	Chief Fiscal Officer
Jennifer Goughler	Vice President of Administration and Development
Kim C. Savoie	Vice President of Programs and Compliance
Bogie Goughler	Vice President of Production and Community Based Services
Pam Cromie	Director of Adult Achievement Center
Christin Pierce	Director of Community Based Services
Bob Reesman	Director of Operations
Kim Leone	Director of Benefits and Finance

## Our Locations

<b>Oak Avenue (Main Office)</b> 301 Oak Avenue Kittanning, PA 16201 Phone: 724-548-5664 Fax: 724-545-2088	<b>Leonard M. Meneely Industrial Center</b> 1340 North Water Street Kittanning, PA 16201 Phone: 724-548-5664 Fax: 724-545-2088
<b>Adult Achievement Center</b> 368 Butler Road Kittanning, PA 16201 Phone: 724-919-8899	<b>PWAC Shelocta</b> 9561 Route 422 W Shelocta, PA 15774 Phone: 724-548-5664



## STAY CONNECTED!



Be sure to visit us at [www.progressiveworkshop.com](http://www.progressiveworkshop.com) and check us out on Facebook, Instagram, LinkedIn, and Flickr! Email us at [info@progressiveworkshop.com](mailto:info@progressiveworkshop.com) with referrals and general inquiries.



**Move people toward jobs!**